



FW-787 SHING RAY

星銳牌工業用縫紉機 SHING RAY BRAND INDUSTRIAL SEWING MACHINE

NEW



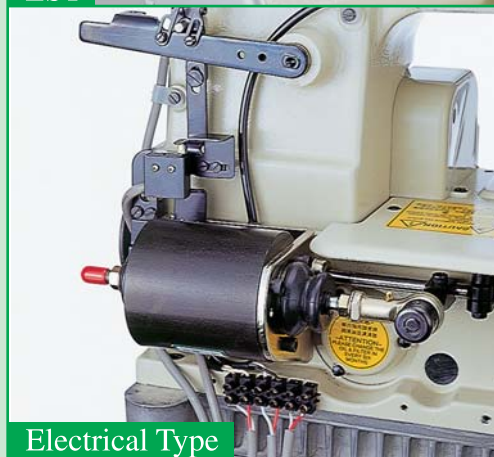
※ATTACHMENT :



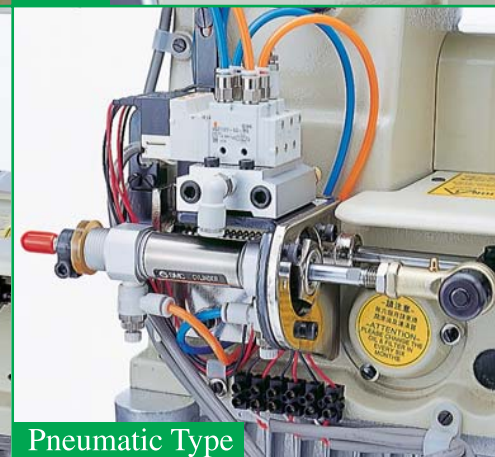
EST



EWT



Electrical Type



Pneumatic Type

※APPLICATION:

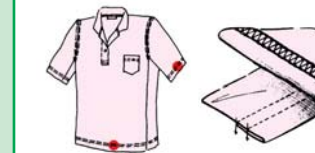
※適用於各種針織品、運動服壓線。
Applicable to covering seams on all sorts of knitted goods, sportswear.



※適用於各式運動褲、褲頭。
Applicable to hemming wide waist band of trousers.



※適用於各式休閒服、摺袖口、摺下擺。
Applicable to hemming bottoms on T-shirts underwear and sports wear.



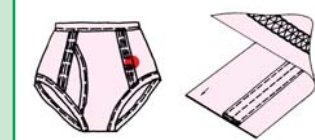
※適用於各種運動服、夾克、壓單邊雙針。
Applicable to covering double-stitches w/o upper spreading on sportswear jackets.



※適用於各式大小鬆緊帶、泳裝、韻律裝。
Applicable to hemming elastic bands on swimming suits and aerobic suit.



※適用於各式壓條、男內褲。
Attached with tape folder on presser foot to covering seams on men' underpants



※SPECIFICATION :

MODEL	針數	針距	切線刀	挑線器	壓線器	壓線器	壓線器	AVAILABLE DEVICE
FW787-240	2	3	1.4	4.0		0.8		
FW787-248	2	3		4.8				
FW787-348	3	5		4.8				AST AWT
FW787-356	3	5		5.6	7.0		4,500	EST EWT
FW787-364	3	5		6.4				Q、F、L
FW787-456	4	6		5.6				
FW787-460	4	6		6.0				
FW787-464	4	6	4.5	6.4		1.4		

※DEVICE NO :

FW787-356 □ □ □

A : Pneumatic Type
氣動式

E : Electrical Type
電磁式

S : Top & Bottom Trimmer
上、下切線刀

W : Thread Wiper & Bottom Trimmer
上挑線器、下切線刀

T : Trimmer
切線刀

Q : Binder Attachment
啦叭包邊裝置

L : Rear Puller
後拖引輪

F : Waise Band Attachment
上褲腰裝置

橫筒型三針綑縫機附自動切線裝置 CYLINDER BED COVERING STITCH MACHINE WITH THREAD TRIMMER

經銷商AGENT



星銳縫紉機股份有限公司
SHING RAY SEWING MACHINE CO., LTD.

※本目錄所記載的規格式樣或外觀，因加以改良，有時不預告即加以變更，請見諒。
The specifications in this catalog are subject to change without notifications.

2007.07



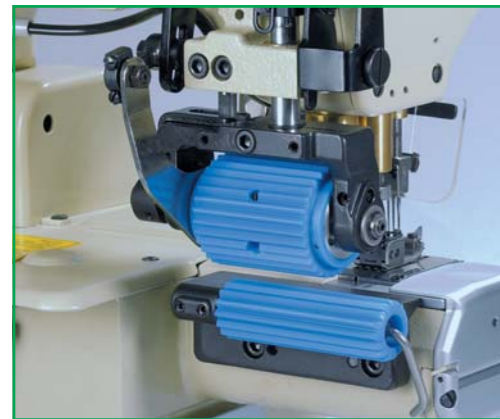
FW-787 ★ SHING RAY



率先專利開發，電磁直驅式抬壓腳組，不產生雜音，反應更為靈敏。
(台字號第175856號)

電磁直驅式抬壓腳組

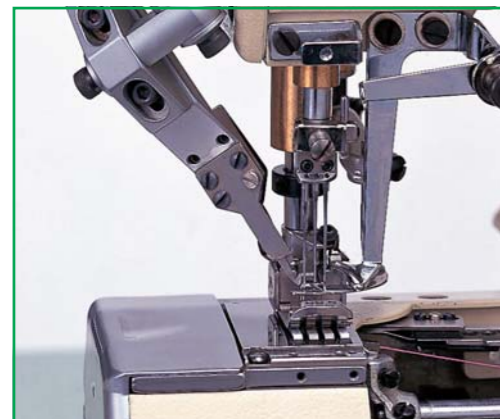
First, to develop the patent of "Direct Driving Type" Presser Foot Lifter. It's going to more sensitive and silent.



加長下滾輪長度，使送布穩定，降底故障率，更換容易，不因速度快慢，產生大小針。

單向式後拖輪組

To extend the Length of Lower Feed Roller. To offer you more stable feeding, Low Breakdown and easy to repair. The machine speed don't disturb the stitch length.

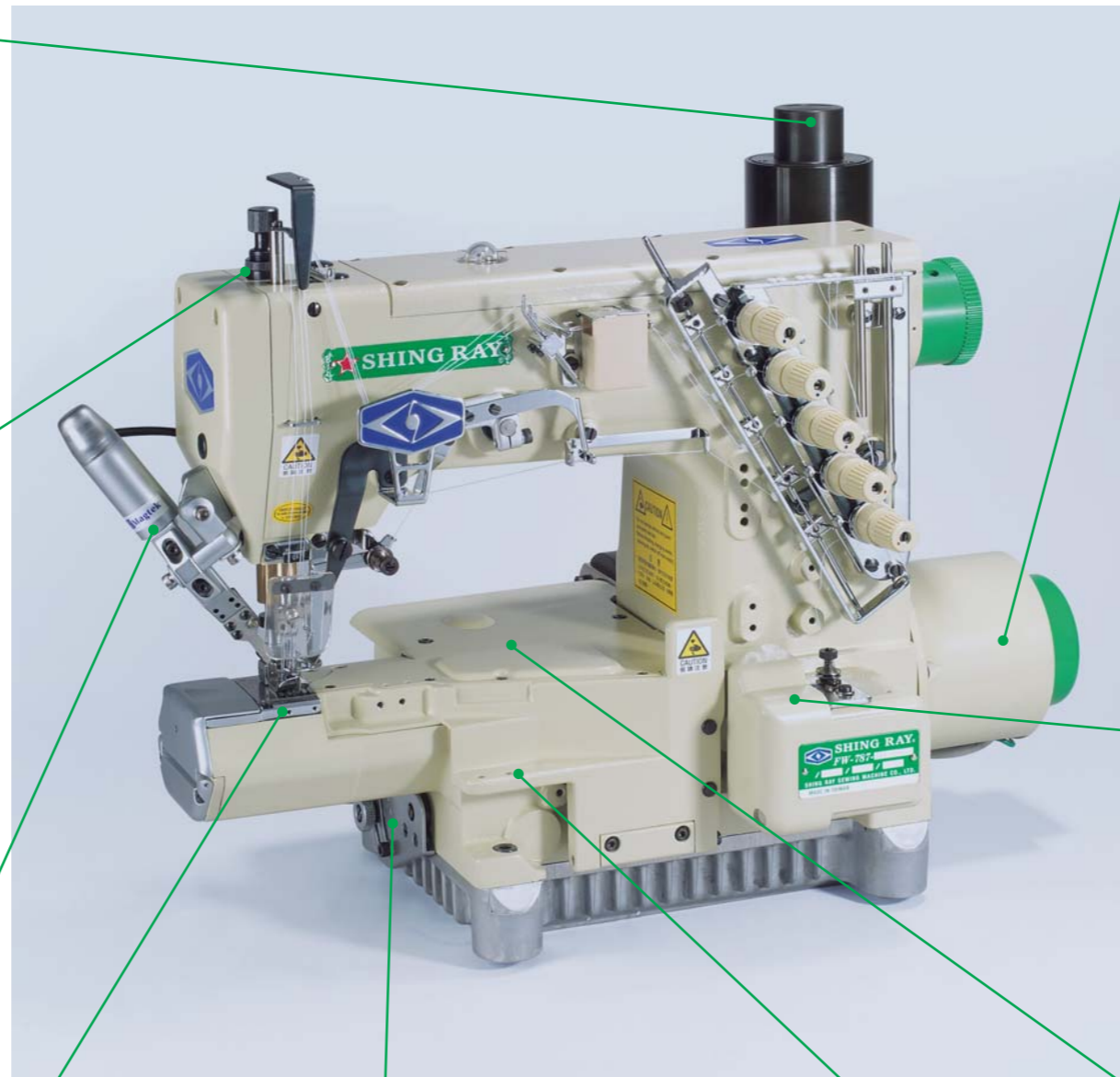


專利設計的上飾線切線刀，可依使用者之需求調整至最適當的任何切線角度。

(台字號第135363號)

多向可調式上飾線切刀組

The top thread trimmer could follow the user's requested to adjust any precise cutting angle.



首創專利設計”直驅、外接下主軸心式”迷你伺服小馬達。安裝容易、反應靈敏、寂靜無聲、定位準確、車頭不因切線、而搖動。

詳驅：侶接狹狹軸心式迷爛侑服基馬達

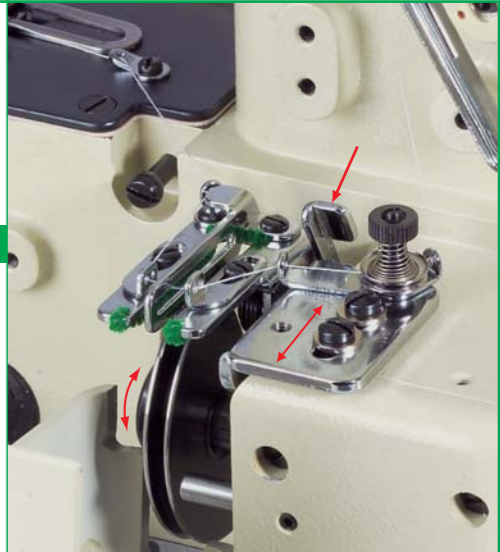
The first design, patent awarded "Directly Driving Under Shaft Connecting Type" mini servo motor which could offer you easy to installation, more sensitive, more silence and precisely needle position detection. The machine head wouldn't swing when it trimming.



專利底線分線盤前置於機體內側，可輕易清除絞線、調整容易。可微調的底線過線架，可針對底線的收放與鬆緊，做更精細的調整。

前置式底線分線盤

The patented looper thread take-up put on the front of body, to clean the winding and adjustment easily. The flexible thread take-up eyelet holder, to offer the looper thread tension and release more details adjustment.

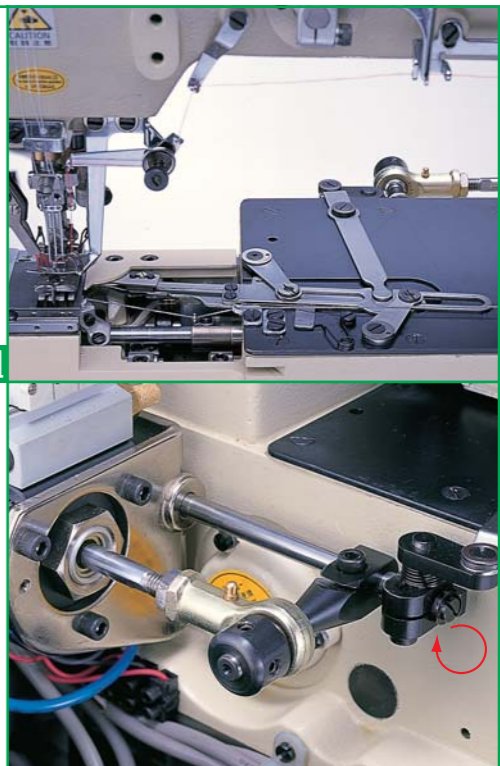


精心改良的底線切線刀，專利的結構，使得切線穩定、校調方便。其特殊的切刀推進機構，可以準確的微調出刀的尺寸。

(中國專利字號：ZL 01 2 54752.2)

微調式底線切刀組

The patented structure provide stable cutting and easy maintenance. The special design under trimmer plunger, to micro-adjust the length of blade precisely when it cutting.



牛角式布誘導器使埋壓拷克骨更為穩定。

牛角式布誘導器

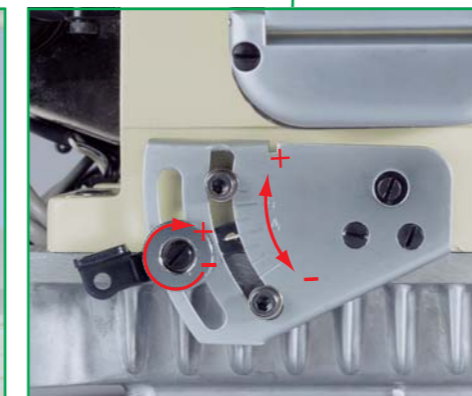
"Horn type" regulating fabric guide, to offer stable covering stitch.



簡易可調式導布喇叭，輕易切換折邊縫功能。

可調式導布喇叭

Adjustable piping hemmer offer hemming function.



搖桿式針距調整結構，可輕鬆方便的調整針距。

搖桿式針距調整

The micro stitch length regulating lever which could adjust the stitch length easily.



更換導具規格組，加裝輔助配件即可使用原平台喇叭，產生標準包邊車縫。壓骨、折下襷、包邊三種功能合一的全能型機種。
(台字號第176007號)

全能型機種

Only change the gauge set & attachment which could use the binder of flat-bed machine to offer standard tape attaching. "Covering, Hemming & Taping", three basic functions in one m/c.